

## KM SERIES

### SHORT CYLINDERS WITH LOCK NUT 25 TO 400 TONS



Power **25-400 tonnes**

Stroke **60-150 mm**

### KM series

The **lightweight, short, locknut cylinders of the KM series** are suitable for use in confined spaces thanks to their compact design. With the help of the locking nut, the **load can be fixed in the desired position and retained for a long time**. They are particularly suitable for use in construction, heavy industry and all maintenance and assembly work.

### 3 YEARS WARRANTY THANKS TO PROVEN QUALITY

- Locking nut for **safe mechanical holding of the load for an indefinitely long period of time**
- **Low weight and height** due to high power and lift.
- **Standard H** - hardened inner cylinder surface **with increased corrosion protection** leads to resistance to moisture and dirt damage to the cylinder interior. This minimises the possibility of jamming.
- **Standard S** - high **resistance to dirt in the oil** thanks to the wiper ring
- **Thanks to the unique design of the guide surfaces, the roller resists lateral loads without seizing**. When the lateral force increases, the cylinder will shift or tilt. The guiding and sealing surfaces are not damaged and the cylinder will not seize.
- **Flexibility**
  - Threaded holes in the bottom of the cylinder allow attachment to various devices
  - For **easy handling**, models from 90 tonnes capacity are equipped with a handle or hanging eyes
- Piston reverse stroke by means of a powerful return spring on all models, resulting in significantly faster work in multiple operations
- Safety overflow hole protects the cylinder against exceeding the permitted piston stroke

Performance **25-400  
tonnes**Stroke **60-150 mm****KM series****Technical parameters**

Power / load capacity* t (kN)	Stroke mm	Model	Piston area cm <sup>2</sup>	Stroke. Volume cm <sup>3</sup>	Diameter D mm	Height H mm	Weight ** kg
25 (269)	60	KM25-60HS	38,47	230,8	95	140	7,0
	100	KM25-100HS	38,47	384,4	95	180	9,6
	150	KM25-150HS	38,47	577,1	95	230	11,3
50 (496)	60	KM50-60HS	70,85	425,1	125	153	13,4
	100	KM50-100HS	70,85	708,5	125	193	16,9
	150	KM50-150HS	70,85	1 062,8	125	243	21,3
90 (929)	80	KM90-80HS	132,67	1 061,4	165	198	29,0
	150	KM90-150HS	132,67	1 990,1	165	268	39,3
140 (1 407)	80	KM140-80HS	201,06	1 608,5	205	220	54,0
	150	KM140-150HS	201,06	3 015,9	205	290	67,0
200 (1 985)	100	KM200-100HS	283,39	2 833,9	245	275	89,2
	150	KM200-150HS	283,39	4 250,9	245	325	105,4
300 (2 908)	100	KM300-100HS	415,47	4 154,7	290	330	141,0
	150	KM300-150HS	415,47	6 232,1	290	380	162,0
400 (4 070)	100	KM400-100HS	572,27	5 722,7	340	370	263,0
	150	KM400-150HS	572,27	8 583,9	340	420	298,5

\*Maximum output at 70 MPa cylinder pressure

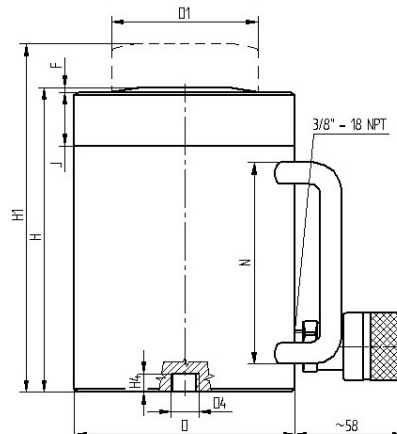
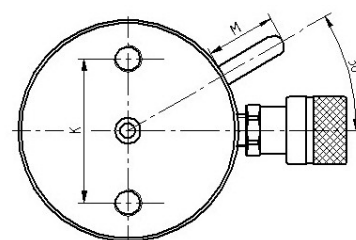
\*\* Weight including quick coupling, cover nut, pressure target and oil fill

## Cylinder dimensions

Power / load capacity † / (kN)	Stroke mm	Model	D mm	D1 mm	H mm	H1 mm	F mm	J mm	K mm	D4	H4 mm	M mm	N mm
25 (269)	60	KM25-60HS	95	70	140	200	2	15	62	M12	11		
	100	KM25-100HS	95	70	180	280	2	15	62	M12	11		
	150	KM25-150HS	95	70	230	380	2	15	62	M12	11		
50 (496)	60	KM50-60HS	125	95	154	214	3	20	95	M12	9		
	100	KM50-100HS	125	95	194	294	3	20	95	M12	9		
	150	KM50-150HS	125	95	244	394	3	20	95	M12	9		
90 (929)	80	KM90-80HS	165	130	198	278	4	27	140	M12	14	50	126
	150	KM90-150HS	165	130	268	418	4	27	140	M12	14	50	126
140 (1 407)	80	KM140-80HS	205	160	220	300	4	35	140	M12	14	50	126
	150	KM140-150HS	205	160	290	440	4	35	140	M12	14	50	126
200 (1 985)	100	KM200-100HS	245	190	275	375	5	42	140	M12	14		
	150	KM200-150HS	245	190	325	525	5	42	140	M12	14		
300 (2 908)	100	KM300-100HS	290	230	330	430	5	50	140	M12	14		
	150	KM300-150HS	290	230	380	530	5	50	140	M12	14		
400 (4 070)	100	KM400-100HS	340	270	370	470	5	55	140	M12	14		
	150	KM400-150HS	340	270	420	570	5	55	140	M12	14		

### DELIVERY RANGE

- Cylinder with lock nut
- Quick coupling for connection to pressure oil source



### MEMBERSHIP

- **Pumps** - e.g. PJ-500, more at [www.kgf.cz](http://www.kgf.cz)
- **Pressure gauges** - e.g. diameter 63 mm
- **Hoses** - length as required
- **Manifold fittings**



Czech quality and creativity

**KGF hydraulika s.r.o.**  
Bohunická 1a 619  
00 Brno

tel/fax: +420 543 245 870 kgf@kgf.cz  
[www.kgf.cz](http://www.kgf.cz)

